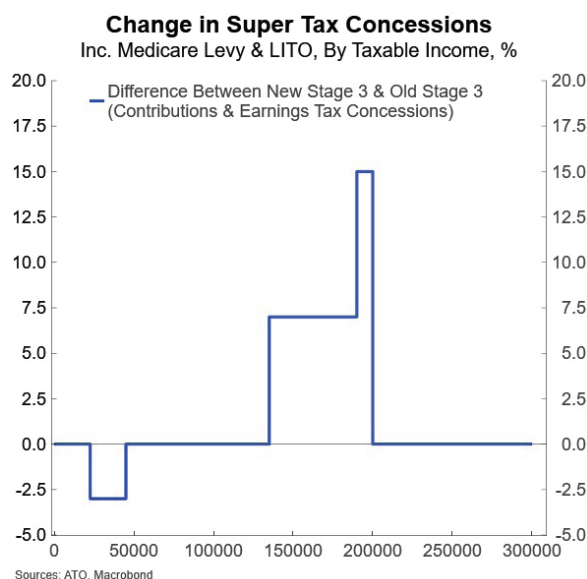
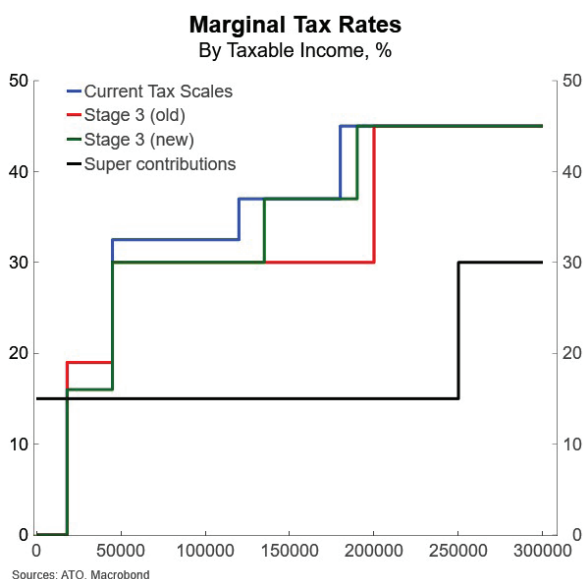


Tax insights Super incentive tweaks post tax change

- Much has been said about the Government's changes in January to the previously legislated stage 3 tax cuts. One area that has received less attention is the interaction between the changes to the tax scales and the superannuation system.
- Superannuation is taxed concessional. There is a lower tax rate applied to contributions and earnings inside the super system compared to taxes paid outside of super. This is to encourage people to save for their own retirement and compensate for the money being locked away until they retire – with some limited exceptions.
- The size of the incentive, determined by the tax rates within and outside of super, is an important driver of how widely super concessions are used and who receives the biggest benefits. This also helps to understand potential behavioural responses from policy changes.
- The updated stage 3 tax package makes superannuation relatively more concessional for higher income earners (between \$135k and \$200k) and relatively less concessional for lower income earners (between around \$22.5k and \$45k) compared to the previously legislated package.
- The macro impact of these changes is small. However, at the margins, they provide relatively larger incentives for higher income earners to increase super contributions to reduce their tax and regain some of the benefits lost (compared to the previously legislated stage 3 changes).
- Super tax concessions are heavily skewed towards higher-income earners. People in the top two taxable income deciles (above \$95k) receive around 55% of these benefits. These changes are likely to further entrench this into the future, potentially adding to growing discussion around the sustainability of Australia's tax and transfer system, including superannuation tax settings.



Much has been said about the Government's changes in January to the previously legislated stage 3 tax cuts. The changes are aimed at redistributing more of the benefit to low- and middle-income earners to help with elevated cost-of-living challenges. These changes have passed through Parliament and will be effective from July 2024.

2023-24 income year		Previous stage 3 tax rates		Newly legislated tax rates	
Taxable Income (\$)	Marginal Rate (%)	Taxable Income (\$)	Marginal Rate (%)	Taxable Income (\$)	Marginal Rate (%)
0 - 18,200	0	0 - 18,200	0	0 - 18,200	0
18,201 - 45,000	19	18,201 - 45,000	19	18,201 - 45,000	16
45,001 - 120,000	32.5	45,001 - 200,000	30	45,001 - 135,000	30
120,001 - 180,000	37	200,000 +	45	135,001 - 190,000	37
180,001 +	45			190,001 +	45

Past performance is not a reliable indicator of future performance. The forecasts given above are predictive in character. Whilst every effort has been taken to ensure that the assumptions on which the forecasts are based are reasonable, the forecasts may be affected by incorrect assumptions or by known or unknown risks and uncertainties. The results ultimately achieved may differ substantially from these forecasts.

Australia's tax and transfer system is complex. It is important not just to think about the tax scales but to also consider the many interactions between the marginal tax scales and other aspects of the system. These interactions increase complexity significantly.

Policy authorities consider interactions from the perspective of trying to achieve a particular policy outcome and to predict what behaviour may be induced by policy changes. Other agents in the tax system, including individuals, tax planners and advisors, consider interactions to optimise outcomes for their and their clients' circumstances.

One of the interactions that hasn't received much attention is the changes to the tax scales and the superannuation system.

Relatively greater incentives for higher-income earners to add to super

The updated stage 3 tax package makes superannuation relatively more concessional for higher income earners (between \$135k and \$200k) and relatively less concessional for lower income earners (between around \$22.5k and \$45k) compared to the previously legislated package.

These changes may lead to some behavioural effects. Higher income earners will become more incentivised to contribute to superannuation to reduce their tax bill than under the old package. However, this comes with the drawback of locking more money away until retirement. Individuals who are closer to retirement or who are not as liquidity constrained and can wait to access the money may be more likely to do so. Depending on the contributions made, this can go a long way to regaining the tax cuts that would have been provided under the old stage 3 package.

Additionally, the increase in the concessional contributions cap to \$30k (from \$27.5k) in the 2024-25 financial year will provide additional cap space to make these contributions.

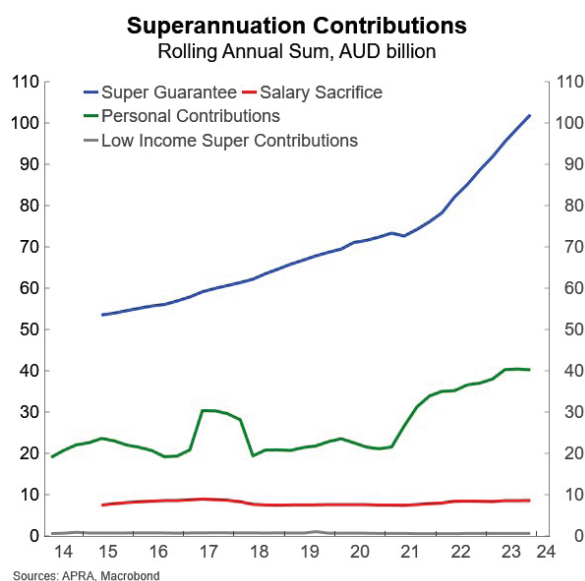
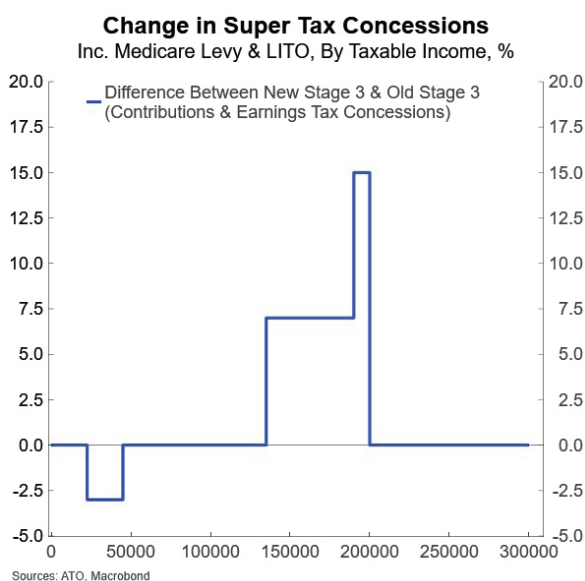
Individuals can also access up to five years' worth of unused concessional contributions if their super balance was below \$500k on 30 June in the prior financial year.

Financial advisors are well equipped to speak with their clients about their individual circumstances and the pros and cons of such an approach to optimise their tax position.

Conversely, contributing to super has become less concessional for lower income earners compared to the previously legislated package and current settings. This increases their opportunity cost and reduces the benefit from super guarantee contributions (i.e. compulsory employer contributions). It also reduces their incentives to make voluntary contributions.

At a macro level, these changes are not large enough to move the needle on total contributions, which are heavily skewed to compulsory employer contributions in any event. However, they may lead to the benefits of superannuation tax concessions becoming even more skewed to higher income earners than is currently the case or would have been the case under the previously legislated package.

This may also add to growing discussion in the community about the sustainability of Australia's tax and transfer system. This includes the reliance on income taxes and the balance between taxing income versus other sources, such as consumption, savings and land.



Superannuation tax settings

The superannuation system is also incredibly complex, but the key point is that superannuation is concessionally taxed. This means that money within the super system is typically taxed in a more preferred way than had it been invested outside of the super system. There

Past performance is not a reliable indicator of future performance. The forecasts given above are predictive in character. Whilst every effort has been taken to ensure that the assumptions on which the forecasts are based are reasonable, the forecasts may be affected by incorrect assumptions or by known or unknown risks and uncertainties. The results ultimately achieved may differ substantially from these forecasts.

are also nuances including a range of contribution and balance thresholds that exist to limit the amount of money that people can get into this concessional environment.

Concessional super contributions (i.e. pre-tax contributions) are taxed at a rate of 15% rather than at marginal rates. This is typically lower than people's marginal rate, resulting in a tax saving for individuals when income is directed towards super.

Individuals with income over \$250,000 pay an additional 15%, lifting their total rate on concessional contributions to 30% and lowering the relative benefit they receive compared to their marginal rate.

Earnings inside the accumulation phase are taxed at a rate of 15%, irrespective of the income of the individual. Capital gains on assets held for over 12 months receive a one third discount (in contrast to the 50% discount for capital gains on assets held for over 12 months by individuals and trusts). This results in an effective tax rate of 10% for capital gains on assets held for over a year.

After moving assets into the retirement phase, earnings become tax free for balances up to an individual's transfer balance cap (currently up to \$1.9 million).

Considering these concessional tax settings, super can provide substantial tax savings for individuals over their working life and into retirement.

The government provides concessions to incentivise saving and compensate individuals for locking money away for decades. This helps people grow their investments to a larger balance than would have been possible had they invested outside of super.

Concessions are expensive and unevenly distributed

This concession comes at a significant cost and most of the benefit flows to higher-income individuals. The 2023-24 Tax Expenditures and Insights Statement showed that collectively, superannuation tax concessions are worth around \$50 billion in 2024-25 (\$28.1 billion for contributions and \$21.3 for earnings). This will rise in both nominal terms and as a share of GDP as the super system continues to mature.

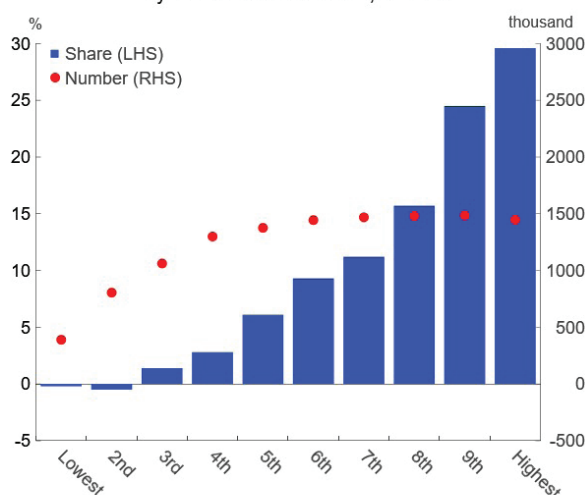
To put that into context, \$51.1 billion was spent on the Age Pension in 2021-22. Looking further out, the Government's 2023 Intergenerational Report estimates that the value of superannuation tax concessions will overtake Age Pension expenditure in the 2040s.

There is an important catch. Money contributed cannot be accessed until an individual hits their preservation age (60 from July 2024), except in some exceptional circumstances. For young people, this means that their money will be locked away for several decades.

Additionally, the value of concessions is not equal for individuals – neither at the point of contributing, nor when earnings are generated. Indeed, the benefits are heavily skewed towards high income earners, while lower income earners either receive very little benefit, or can be worse off in certain situations.

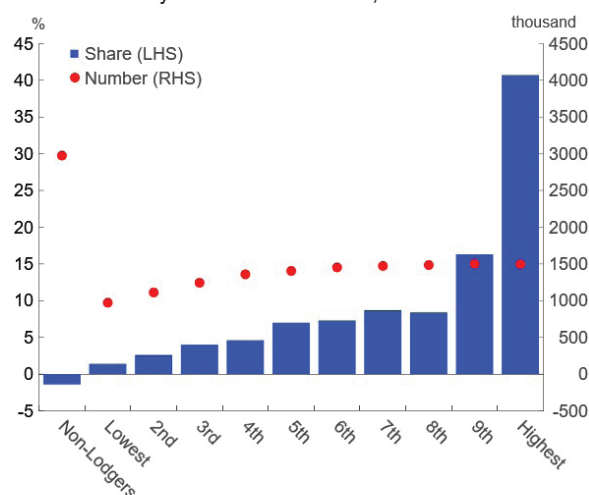
People in the highest taxable income decile (above \$128.1k in 2020-21) received around 30% and 40% of the benefit from the concessional taxation of contributions and earnings, respectively, in 2020-21. That figure rises to around 55% when looking at the top two taxable income deciles (above \$95k in 2020-21). Meaning that over half of the benefit of superannuation tax concessions flows to the top two taxable income cohorts.

Contributions Tax Concessions
By Taxable Income Decile, 2020-21



Sources: Treasury, Macrobond

Earnings Tax Concessions
By Taxable Income Decile, 2020-21



Sources: Treasury, Macrobond

Past performance is not a reliable indicator of future performance. The forecasts given above are predictive in character. Whilst every effort has been taken to ensure that the assumptions on which the forecasts are based are reasonable, the forecasts may be affected by incorrect assumptions or by known or unknown risks and uncertainties. The results ultimately achieved may differ substantially from these forecasts.

Part of this reflects the fact that higher income people contribute more and have more money in superannuation. They are, therefore, expected to receive a greater benefit. While another part reflects the size of the tax concession typically being larger for higher income people.

The latter point is important to consider for tax planning, as the immediate benefit received – and thereby the opportunity cost of investing outside super versus contributing to super – varies depending on an individual's income. In short, higher income people have a much greater incentive to maximise the use of the superannuation system, for saving and tax planning purposes.

Changes to stage 3 likely to exacerbate the skew in concessional super tax benefits

Changes in the tax rates in super or outside super alter the relative costs and benefits of making additional contributions to super.

Specifically, marginal tax rates have changed under the new stage 3 package, while superannuation tax rates remain the same. This will lead to some relative shifts in the concessionality of super at different income levels.

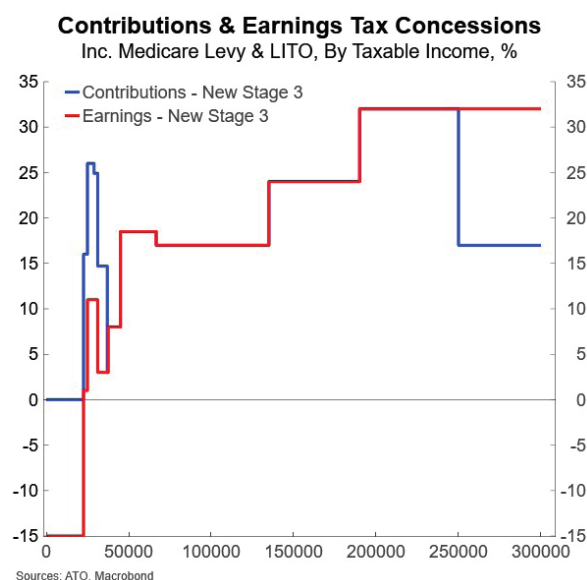
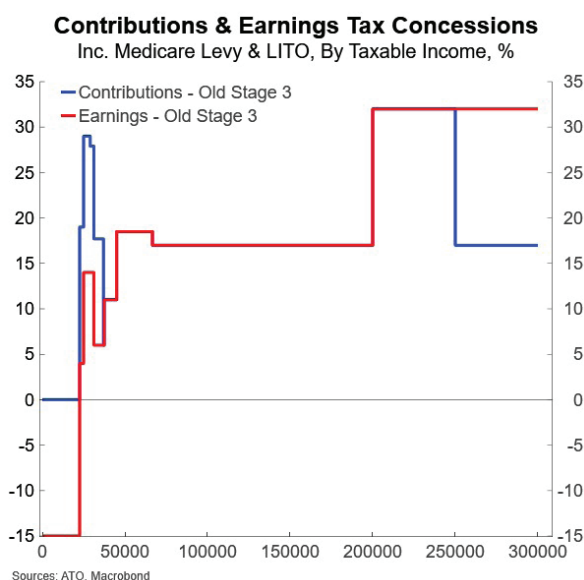
After adjusting for the tapering in of the Medicare Levy, the tapering out of the Low Income Tax Offset, and the Low Income Super Tax Offset (see Appendix for additional detail), the new stage 3 tax cuts make super more concessional for higher income earners and less concessional for lower income earners than under the old stage 3 package.

Specifically, compared to the old stage 3 approach, super becomes more concessional at income levels between \$135,001 and \$200,000, by 7 or 15 percentage points. In contrast, the changes lower the concession by 3 percentage points for income between around \$22,500 and \$45,000.

Compared to the current system, super becomes less concessional for most earners up to \$135,000, marginally reducing their incentive to contribute. Above this, the concession remains broadly unchanged compared to current rates.

The earnings tax concession is negative for people on very low incomes as they pay 15% tax on earnings while they would have paid no tax had they been made outside of the super system. However, this treatment is already in place and remains unchanged in either scenario.

Of note, this excludes a range of other interactions across the tax and transfer systems, such as family tax benefits. These are specific to each individual and family.



Community discussion around broader review of tax and transfer system growing

At a macro level, these changes are marginal. They are unlikely to have an impact on the economy or the adequacy of the superannuation system.

However, they may lead to superannuation concessions being even more skewed towards higher income earners, as they increasingly look for ways to reduce their tax burden as bracket creep and the lack of indexation of tax brackets leads to increases in average tax rates.

Discussion around the value of superannuation for lower income earners – who earn smaller concessions which will also reduce going forward, and receive a lower Age Pension entitlement later in life than they otherwise would due to means testing – may also increase.

More broadly, a large-scale review of Australia's tax and transfer system, or even of just the taxation of superannuation and savings could examine whether current tax settings are appropriate. For example, there are three potential taxing points within a retirement income system – contributions, earnings, and withdrawals. A broad review could include comparing the current approach of taxing concessions, earnings and withdrawals to other approaches.

The current approach is often referred to as a ttE system. This acronym refers to the fact that contributions are concessionally taxed (t), earnings are concessionally taxed (t), and withdrawals are tax exempt (E).

A common approach internationally is an EET system, where contributions are tax exempt (E), earnings are tax exempt (E), and withdrawals are fully taxable (T). Such an approach is more common in the US, UK and many European countries.

There are pros and cons of each approach and there are also other options to explore as well. A holistic review could consider what would be best practice and what policy changes could be made to help move the Australian system closer to an optimal approach.

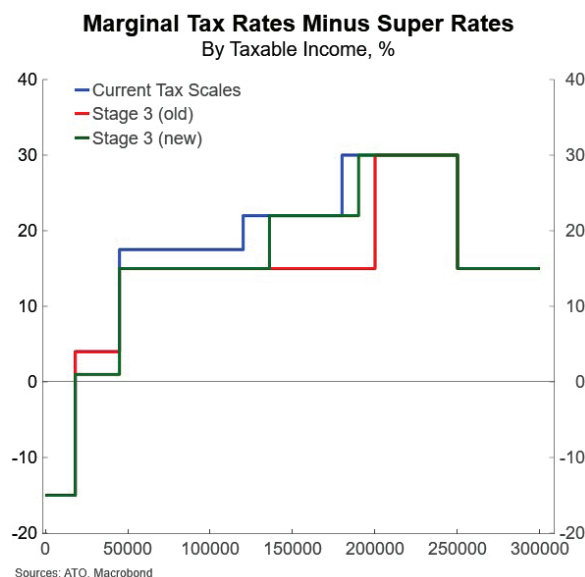
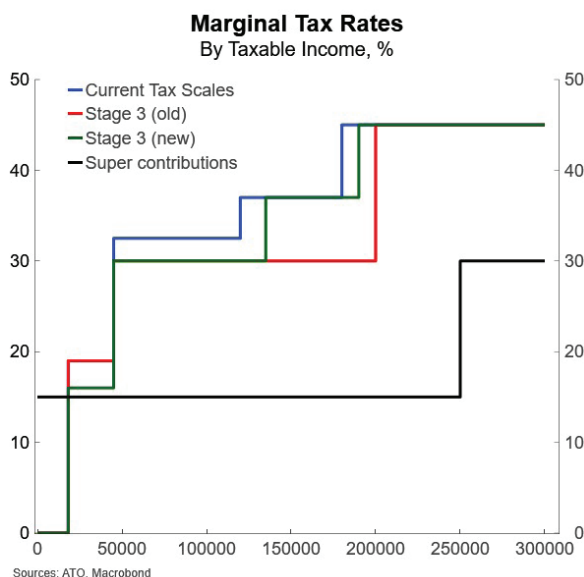
One thing these changes may do is add to the growing discussion in the community around the sustainability of Australia's tax and transfer system, including superannuation tax settings.

Jarek Kowcza, Senior Economist

Ph: +61 481 476 436

Appendix: Marginal tax rates compared to superannuation tax rates

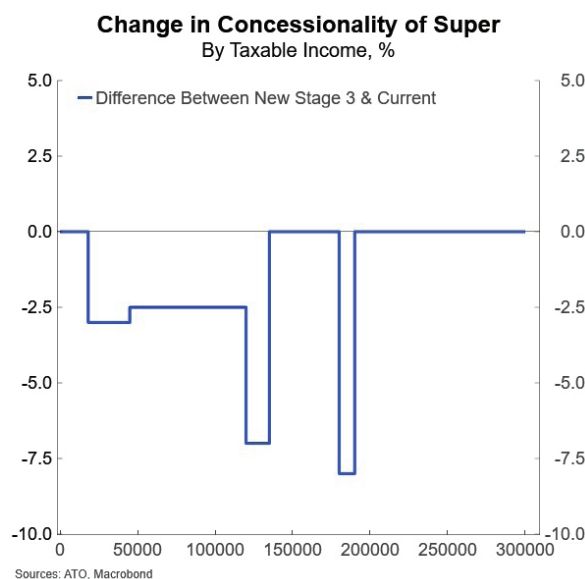
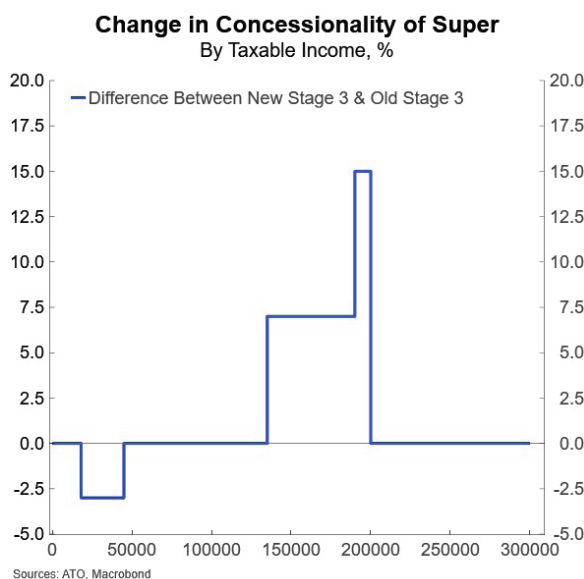
The tax changes make superannuation less concessional for lower income earners that fall into the new 16% tax bracket than the current system or the old stage 3 package. Compared to the current system, super becomes less concessional for most earners up to \$135k. For higher income earners, the changes make super more concessional compared to the old stage 3 package, but broadly unchanged compared to current rates. This reflects differences between new tax rates and the 15% tax on superannuation.



Compared to the old stage 3, super becomes 7 or 15 percentage points more concessional at taxable income between \$135,001 and \$200,000. In contrast, the changes appear to lower the concession by 3 percentage points for taxable income between \$18,201 and \$45,000 – the new 16% bracket.

It appears that people in this range will only receive a 1% tax concession when contributing to superannuation – a tiny benefit when that money needs to be locked away until retirement.

However, that isn't the full story. The picture is more complicated as there are additional elements of the tax system that need to be accounted for.



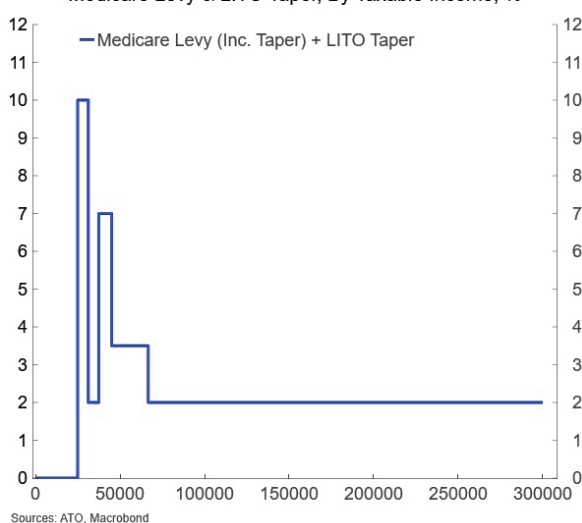
Medicare Levy & LITO taper increase total concession for low-income earners

Effective marginal tax rates are higher than implied by statutory tax scales. This is because certain benefits provided to low-income earners are clawed back as income rises.

Past performance is not a reliable indicator of future performance. The forecasts given above are predictive in character. Whilst every effort has been taken to ensure that the assumptions on which the forecasts are based are reasonable, the forecasts may be affected by incorrect assumptions or by known or unknown risks and uncertainties. The results ultimately achieved may differ substantially from these forecasts.

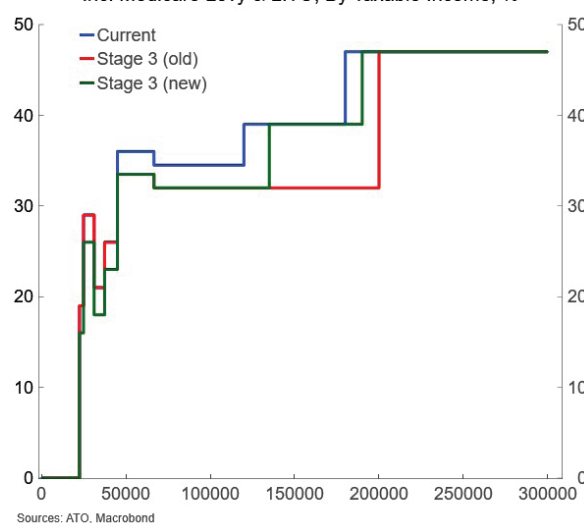
Effective Marginal Tax Rate Add-On

Medicare Levy & LITO Taper, By Taxable Income, %



Effective Marginal Tax Rates

Inc. Medicare Levy & LITO, By Taxable Income, %



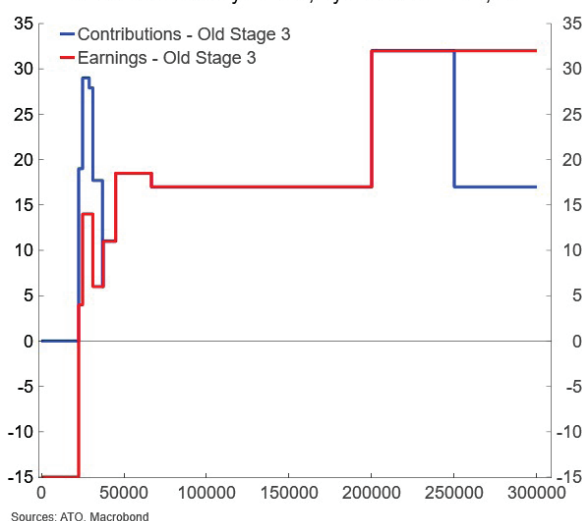
A \$700 Low Income Tax Offset (LITO) is available on income below \$37,500. This is reduced by 5 cents per dollar between \$37,501 and \$45,000, and 1.5 cents per dollar between \$45,001 and \$66,667. The Medicare Levy (2%) is not applied on incomes below a lower threshold and tapers in at a rate of 10 cents per dollar until incomes rise to an upper threshold.

A Low Income Super Tax Offset (LISTO) of up to \$500 is available on income below \$37,000. This avoids a situation where low-income earners would pay more tax (i.e. 15%) on super contributions than had they received that money as income. However, this only removes the negative concession, it doesn't create a benefit. Additionally, this is only provided on contributions. Earnings are still taxed at 15% while they may have been tax free if they were received as income.

Even after making these adjustments, higher income earners continue to receive the greatest benefit from superannuation tax concessions relative to their marginal tax rates. However, the benefit for lower income earners is higher than if these interactions were not considered.

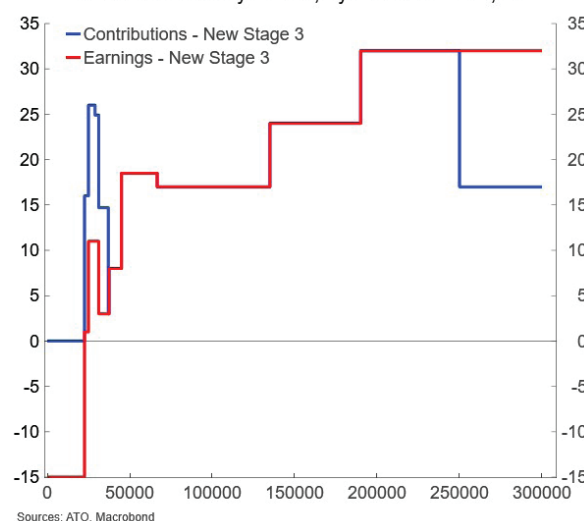
Contributions & Earnings Tax Concessions

Inc. Medicare Levy & LITO, By Taxable Income, %



Contributions & Earnings Tax Concessions

Inc. Medicare Levy & LITO, By Taxable Income, %



© 2024 Westpac Institutional Bank is a division of Westpac Banking Corporation ABN 33 007 457 141, AFSL233714 ('Westpac'). References to the "Westpac Group" are to Westpac and its subsidiaries and includes the directors, employees and representatives of Westpac and its subsidiaries.

Disclaimer

This information has been prepared by the Westpac Institutional Bank and is intended for information purposes only. It is not intended to reflect any recommendation or financial advice and investment decisions should not be based on it. This information does not constitute an offer, a solicitation of an offer, or an inducement to subscribe for, purchase or sell any financial instrument or to enter into a legally binding contract. To the extent that this information contains any general advice, it has been prepared without taking into account your objectives, financial situation or needs and before acting on it you should consider the appropriateness of the advice. Certain types of transactions, including those involving futures, options and high yield securities give rise to substantial risk and are not suitable for all investors. We recommend that you seek your own independent legal or financial advice before proceeding with any investment decision. This information may contain material provided by third parties. While such material is published with the necessary permission none of Westpac or its related entities accepts any responsibility for the accuracy or completeness of any such material. Although we have made every effort to ensure this information is free from error, none of Westpac or its related entities warrants the accuracy, adequacy or completeness of this information, or otherwise endorses it in any way. Except where contrary to law, Westpac Group intend by this notice to exclude liability for this information. This information is subject to change without notice and none of Westpac or its related entities is under any obligation to update this information or correct any inaccuracy which may become apparent at a later date. This information may contain or incorporate by reference forward-looking statements. The words "believe", "anticipate", "expect", "intend", "plan", "predict", "continue", "assume", "positioned", "may", "will", "should", "shall", "risk" and other similar expressions that are predictions of or indicate future events and future trends identify forward-looking statements. These forward-looking statements include all matters that are not historical facts. Past performance is not a reliable indicator of future performance, nor are forecasts of future performance. Whilst every effort has been taken to ensure that the assumptions on which any forecasts are based are reasonable, the forecasts may be affected by incorrect assumptions or by known or unknown risks and uncertainties. The ultimate outcomes may differ substantially from any forecasts.

Conflicts of Interest: In the normal course of offering banking products and services to its clients, the Westpac Group may act in several capacities (including issuer, market maker, underwriter, distributor, swap counterparty and calculation agent) simultaneously with respect to a financial instrument, giving rise to potential conflicts of interest which may impact the performance of a financial instrument. The Westpac Group may at any time transact or hold a position (including hedging and trading positions) for its own account or the account of a client in any financial instrument which may impact the performance of that financial instrument.

Author(s) disclaimer and declaration: The author(s) confirms that no part of his/her compensation was, is, or will be, directly or indirectly, related to any views or (if applicable) recommendations expressed in this material. The author(s) also confirms that this material accurately reflects his/her personal views about the financial products, companies or issuers (if applicable) and is based on sources reasonably believed to be reliable and accurate.

Additional country disclosures

Australia: Westpac holds an Australian Financial Services Licence (No. 233714).

Note: Luci Ellis, Westpac Chief Economist is a member of the Australian Statistics Advisory Council (ASAC) which is a key advisory body to the Minister and the Australian Bureau of Statistics on statistical services. Luci does not have access to sensitive data/ reports in her capacity as a member of ASAC.

New Zealand: In New Zealand, Westpac Institutional Bank refers to the brand under which products and services are provided by either Westpac (NZ division) or Westpac New Zealand Limited (company number 1763882), the New Zealand incorporated subsidiary of Westpac ("WNZL"). Any product or service made available by WNZL does not represent an offer from Westpac or any of its subsidiaries (other than WNZL). Neither Westpac nor its other subsidiaries guarantee or otherwise support the performance of WNZL in respect of any such product. WNZL is not an authorised deposit-taking institution for the purposes of Australian prudential standards. The current disclosure statements for the New Zealand branch of Westpac and WNZL can be obtained at the internet address www.westpac.co.nz.

Singapore: This material has been prepared and issued for distribution in Singapore to institutional investors, accredited investors and expert investors (as defined in the applicable Singapore laws and regulations) only. Recipients of this material in Singapore should contact Westpac Singapore Branch in respect of any matters arising from, or in connection with, this material. Westpac Singapore Branch holds a wholesale banking licence and is subject to supervision by the Monetary Authority of Singapore.

US: Westpac operates in the United States of America as a federally licensed branch, regulated by the Office of the Comptroller of the Currency. Westpac is also registered with the US Commodity Futures Trading Commission ("CFTC") as a Swap Dealer, but is neither registered as, or affiliated with, a Futures Commission Merchant registered with the US CFTC. The services and products referenced above are not insured by the Federal Deposit Insurance Corporation ("FDIC"). Westpac Capital Markets, LLC ("WCM"), a wholly-owned subsidiary of Westpac, is a broker-dealer registered under the U.S. Securities Exchange Act of 1934 ('the Exchange Act') and member of the Financial Industry Regulatory Authority ('FINRA'). This communication is provided for distribution to U.S. institutional investors in reliance on the exemption from registration provided by Rule 15a-6 under the Exchange Act and is not subject to all of the independence and disclosure standards applicable to debt research reports prepared for retail investors in the United States. WCM is the U.S. distributor of this communication and accepts responsibility for the contents of this communication. Transactions by U.S. customers of any securities referenced herein should be effected through WCM.

Disclaimer continued overleaf

Disclaimer continued

All disclaimers set out with respect to Westpac apply equally to WCM. If you would like to speak to someone regarding any security mentioned herein, please contact WCM on +1 212 389 1269. Investing in any non-U.S. securities or related financial instruments mentioned in this communication may present certain risks. The securities of non-U.S. issuers may not be registered with, or be subject to the regulations of, the SEC in the United States. Information on such non-U.S. securities or related financial instruments may be limited. Non-U.S. companies may not be subject to audit and reporting standards and regulatory requirements comparable to those in effect in the United States. The value of any investment or income from any securities or related derivative instruments denominated in a currency other than U.S. dollars is subject to exchange rate fluctuations that may have a positive or adverse effect on the value of or income from such securities or related derivative instruments.

The author of this communication is employed by Westpac and is not registered or qualified as a research analyst, representative, or associated person of WCM or any other U.S. broker-dealer under the rules of FINRA, any other U.S. self-regulatory organisation, or the laws, rules or regulations of any State. Unless otherwise specifically stated, the views expressed herein are solely those of the author and may differ from the information, views or analysis expressed by Westpac and/or its affiliates.

UK and EU: The London branch of Westpac is authorised in the United Kingdom by the Prudential Regulation Authority (PRA) and is subject to regulation by the Financial Conduct Authority (FCA) and limited regulation by the PRA (Financial Services Register number: 124586). The London branch of Westpac is registered at Companies House as a branch established in the United Kingdom (Branch No. BR000106). Details about the extent of the regulation of Westpac's London branch by the PRA are available from us on request.

Westpac Europe GmbH ("WEG") is authorised in Germany by the Federal Financial Supervision Authority ('BaFin') and subject to its regulation. WEG's supervisory authorities are BaFin and the German Federal Bank ('Deutsche Bundesbank'). WEG is registered with the commercial register ('Handelsregister') of the local court of Frankfurt am Main under registration number HRB 118483. In accordance with APRA's Prudential Standard 222 'Association with Related Entities', Westpac does not stand behind WEG other than as provided for in certain legal agreements (a risk transfer, sub-participation and collateral agreement) between Westpac and WEG and obligations of WEG do not represent liabilities of Westpac.

This communication is not intended for distribution to, or use by any person or entity in any jurisdiction or country where such distribution or use would be contrary to local law or regulation. This communication is not being made to or distributed to, and must not be passed on to, the general public in the United Kingdom. Rather, this communication is being made only to and is directed at (a) those persons falling within the definition of Investment Professionals (set out in Article 19(5) of the Financial Services and Markets Act 2000 (Financial Promotion) Order 2005 (the "Order")); (b) those persons falling within the definition of high net worth companies, unincorporated associations etc. (set out in Article 49(2) of the Order); (c) other persons to whom it may lawfully be communicated in accordance with the Order or (d) any persons to whom it may otherwise lawfully be made (all such persons together being referred to as "relevant persons"). Any person who is not a relevant person should not act or rely on this communication or any of its contents. In the same way, the information contained in this communication is intended for "eligible counterparties" and "professional clients" as defined by the rules of the Financial Conduct Authority and is not intended for "retail clients". Westpac expressly prohibits you from passing on the information in this communication to any third party.

This communication contains general commentary, research, and market colour. The communication does not constitute investment advice. The material may contain an 'investment recommendation' and/or 'information recommending or suggesting an investment', both as defined in Regulation (EU) No 596/2014 (including as applicable in the United Kingdom) ("MAR"). In accordance with the relevant provisions of MAR, reasonable care has been taken to ensure that the material has been objectively presented and that interests or conflicts of interest of the sender concerning the financial instruments to which that information relates have been disclosed.

Investment recommendations must be read alongside the specific disclosure which accompanies them and the general disclosure which can be found here: <https://www.westpaciq.com.au/terms-and-conditions/investment-recommendation-disclosure>. Such disclosure fulfils certain additional information requirements of MAR and associated delegated legislation and by accepting this communication you acknowledge that you are aware of the existence of such additional disclosure and its contents.

To the extent this communication comprises an investment recommendation it is classified as non-independent research. It has not been prepared in accordance with legal requirements designed to promote the independence of investment research and therefore constitutes a marketing communication. Further, this communication is not subject to any prohibition on dealing ahead of the dissemination of investment research.